

Pietarsaaren Senior Open



Oil Pattern Distance: 42 Feet **Reverse Brush Drop:** 42 Feet **Oil Per Board:** 50 uL
Forward Oil Total: 15.6 mL **Reverse Oil Total:** 10.2 mL **Volume Oil Total:** 25.8 mL
Forward Boards Crossed: 312 Boards **Reverse Boards Crossed:** 204 Boards **Total Boards Crossed:** 516 Boards

	Start	Stop	Loads	Speed	Crossed	Start	End	Feet	T.Oil
1	2L	2R	2	18	74	0.0	5.0	5.0	3700
2	7L	7R	1	18	27	5.0	7.0	2.0	1350
3	9L	9R	2	18	46	7.0	12.0	5.0	2300
4	10L	10R	3	18	63	12.0	19.0	7.0	3150
5	11L	11R	2	18	38	19.0	24.0	5.0	1900
6	12L	12R	2	18	34	24.0	29.0	5.0	1700
7	13L	13R	2	18	30	29.0	34.0	5.0	1500
8	2L	2R	0	22	0	34.0	42.0	8.0	0

Forward Reverse More

	Start	Stop	Loads	Speed	Crossed	Start	End	Feet	T.Oil
1	2L	2R	0	30	0	42.0	34.0	-8.0	0
2	12L	12R	2	22	34	34.0	28.0	-6.0	1700
3	11L	11R	3	18	57	28.0	21.0	-7.0	2850
4	10L	10R	2	18	42	21.0	16.0	-5.0	2100
5	9L	9R	2	18	46	16.0	11.0	-5.0	2300
6	8L	8R	1	14	25	11.0	10.0	-1.0	1250
7	2L	2R	0	14	0	10.0	0.0	-10.0	0

Forward Reverse More

Conditioner:
Kegel Curve

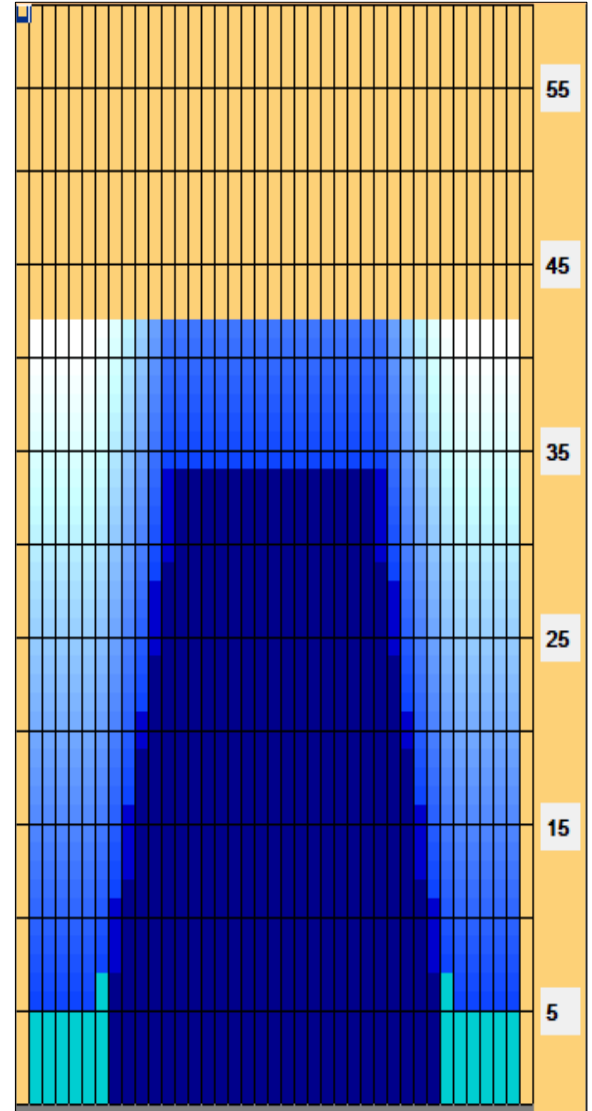
TransferType:
Transfer Brush

Forward

Reverse

Combined

Buff



Item	3L-7L:18L-18R	8L-12L:18L-18R	13L-17L:18L-18R	18L-18R:17R-13R	18L-18R:12R-8R	18L-18R:7R-3R
Description	Outside Track:Middle	Middle Track:Middle	Inside Track:Middle	Middle: Inside Track	Middle:Middle Track	Middle:Outside Track
Track Zone Ratio	10.91	1.85	1	1	1.85	10.91

